



Ibbett Mosely

High Street, Brasted, TN16 1JJ







Within the village Conservation Area and An Area of Outstanding Natural Beauty this fascinating attached period barn is in a tucked away location behind the period properties fronting the village high street. Internally the property has many period features and spacious accommodation which extends to about 2000 sq ft in total. There is a lovely well maintained and sunny landscaped partly walled garden

- Three Double Bedrooms
- Three Bath/Shower Rooms
- Sitting/Family Room with Balcony
- Kitchen/Dining Room
- Conservatory
- Utility Room
- Gas Central Heating
- Period Features
- Established Landscaped Garden
- Parking by Informal Arrangement (Speak to the Agent)

PRICE: OFFERS IN EXCESS OF £750,000  
FREEHOLD

## LOCATION

The village of Brasted is located on the A25 between the larger towns of Sevenoaks to the east and Westerham to the west, within the town there is a village shop, a medical practice, two public houses/restaurants as well as several other individual shops and businesses, just along the road from the property is the village green. There is a recreation ground with tennis courts and play equipment and a pre-school. There are state and private schools in the surrounding villages and towns as well as a good selection of sporting facilities including a number of golf courses. Bus connections from the village to Sevenoaks with a wider choice of shops and train station to London. M25 access from junction 5 is a short drive away.

The property is located behind the period properties which assists in making this unique home a secure home of which an inspection is highly recommended.

## GROUND FLOOR

The front door opens into the kitchen/dining room.

## KITCHEN/DINING ROOM

The bespoke hand made kitchen comprises a range of base units with granite worktops, five ring range cooker with extractor and feature beam over, island unit with drawers under. Twin sinks, antique style radiator, built in wine fridge and free standing fridge freezer, radiators, exposed timbers to the ceiling and slate flooring.

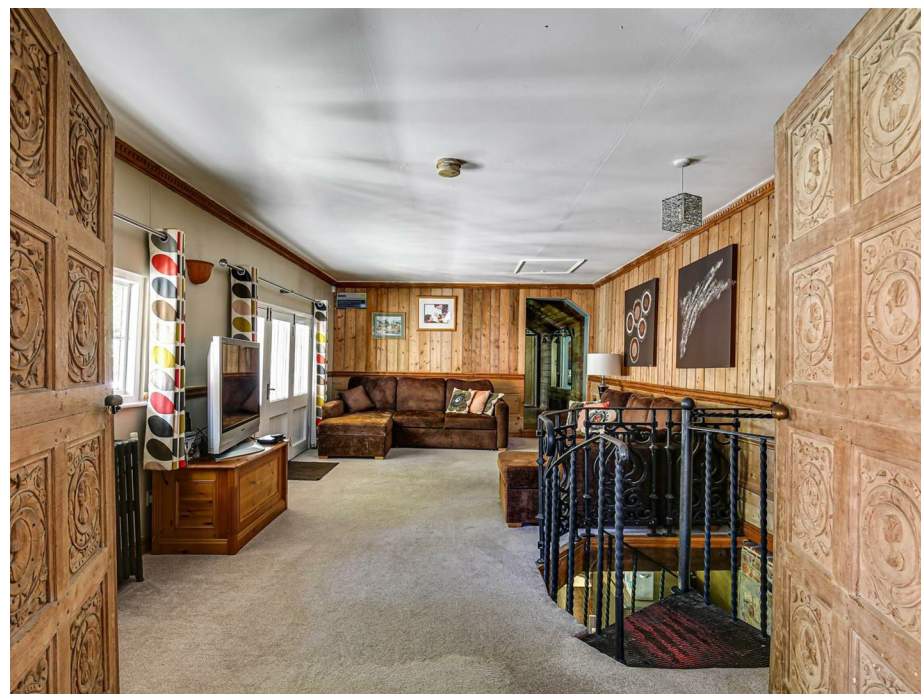
There is a spiral staircase to the first floor. The dining area has an antique style radiator, wall light points, exposed timbers to the ceiling, slate flooring, exposed feature brick wall to one side and glazed doors to the garden and to the conservatory.

## CONSERVATORY

With antique style radiator, recently installed log burning stove. Doors to the garden, exposed feature brick and stone wall.

## UTILITY ROOM

With door from the kitchen, washing







machine, dish washer, gas boiler for central heating and hot water, fitted shelves, high level radiator, slate flooring and glazed door to the garden

### BEDROOM ONE

With antique style radiator, part panelled walls, double glazed double doors to the courtyard garden, fitted wardrobe cupboard, slate tiled flooring, and further door to the courtyard garden.

### EN-SUITE SHOWER ROOM

With shower, w.c. and hand basin. Chrome ladder style towel rail, part tiled walls, double glazed window and tiled flooring.

### FIRST FLOOR

#### SITTING/FAMILY ROOM

With radiator, part panelled walls. Balcony overlooking the garden. Hatch to the loft space with drop down ladder and plenty of boarded storage space. Double doors to bedroom and doorway to the landing.

#### LANDING

With radiator, part panelled walls, exposed floor boards and fitted cupboards.

#### BEDROOM TWO

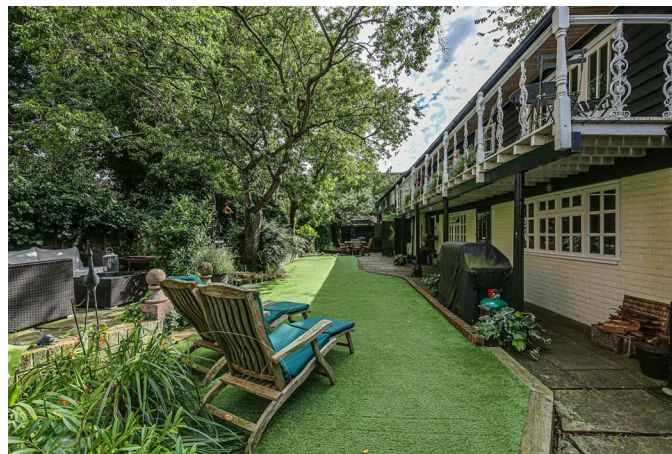
With radiator, fitted wardrobe cupboards, door to the shower room and feature window over the door.

#### BATHROOM

Fitted with a white suite of roll top bath with ball and claw feet, w.c. and hand basin. Radiator, oak flooring and low level painted wood panelling.

#### SHOWER ROOM

With shower cubicle, w.c. and hand basin. Chrome ladder towel rail and part tiled walls. Doors from the landing and to bedroom two.







### BEDROOM THREE

With radiator, doors to the balcony, part panelled walls, wall light points and circular coloured glass window.

### OUTSIDE

There is a gated and secure access from the High Street which leads to the partly walled garden which has been designed to maximize the setting, there are three seating areas, an area of artificial grass, a pond with fountain, a sun deck. The garden has been planted with a variety of plants, shrubs and trees including a eucalyptus, ash, wisteria and cherry. There is also a garden cloakroom. There is outside lighting and power.

### NOTE

The hot tub is available by separate negotiation.

### PARKING

The owners have an informal arrangement for two parking spaces in a nearby car park and the owners have confirmed that the spaces can be used by the future owners of The Summer House. Unrestricted on road parking on the high street.

### SERVICES

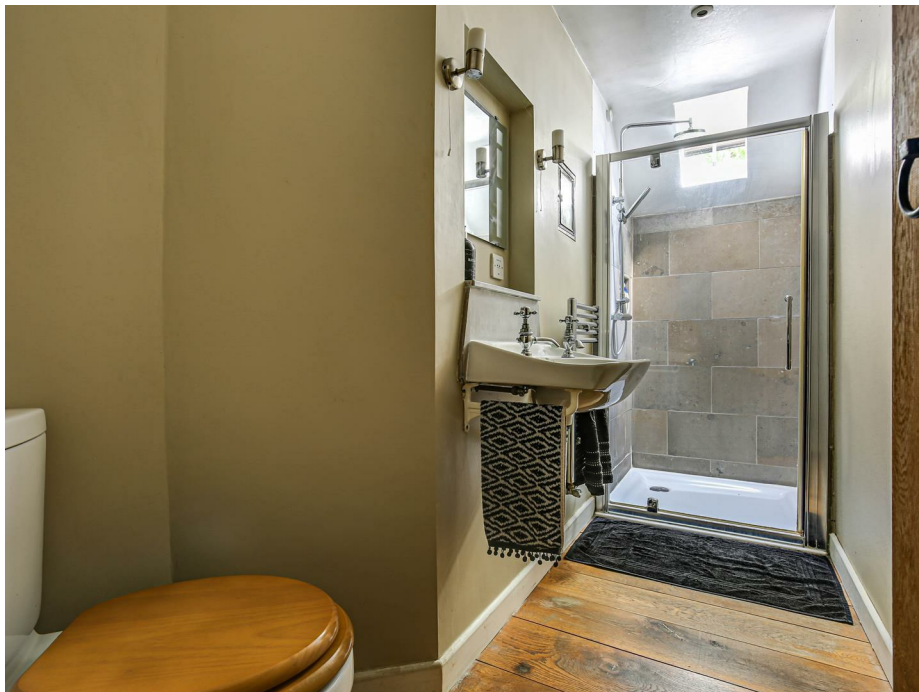
Mains gas, water, electricity, drainage and broadband are connected.

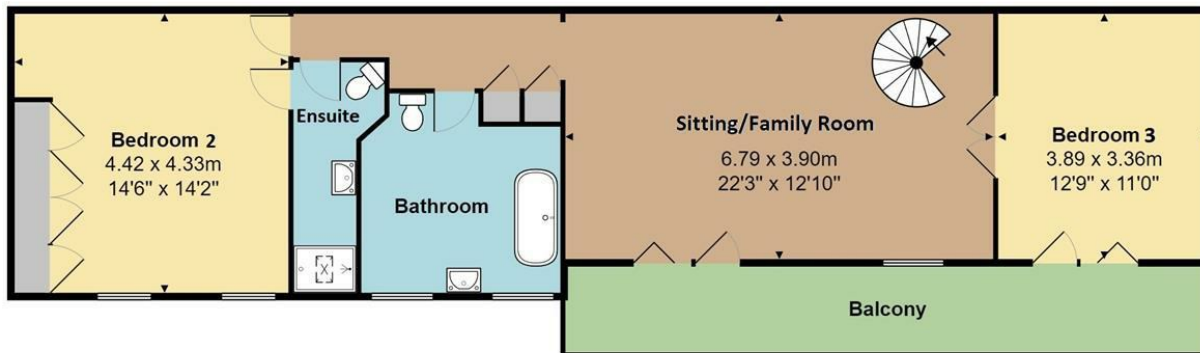
### COUNCIL TAX

The property is located in the Sevenoaks District and is in council tax band "F"

### DIRECTIONS

From Westerham proceed on the A25 towards Sevenoaks, on entering the village of Brasted the entrance to the property will be found on the left immediately after the Beauty Salon through black gates.

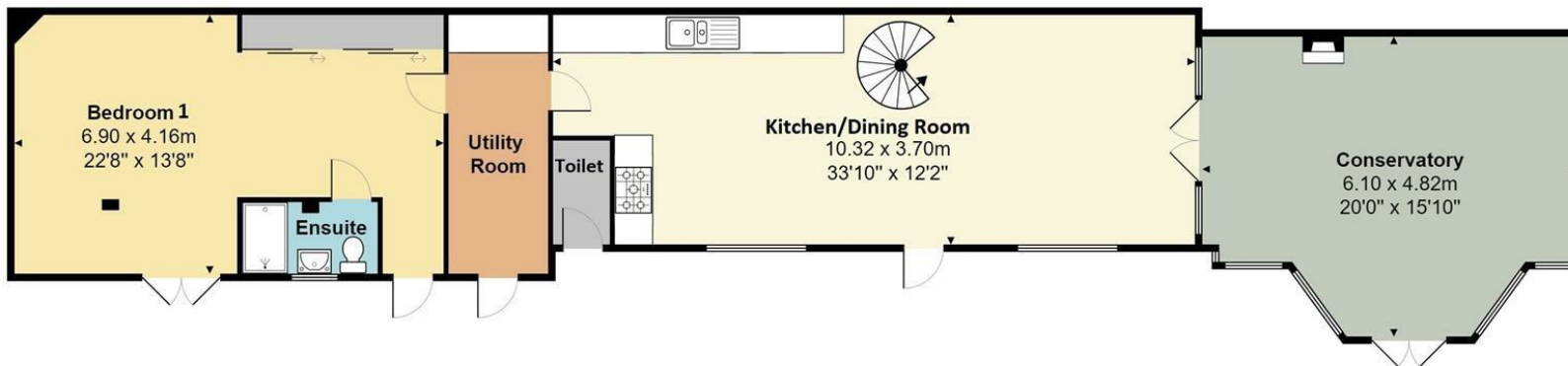




High Street, Brasted, TN16

Total Floor Area: 178.2 m<sup>2</sup> ... 1918 ft<sup>2</sup>

Measurements are approximate,  
not to scale and for illustrative purposes only.  
[www.essentialpropertymarketing.com](http://www.essentialpropertymarketing.com)



**Ibbett Mosely**

**Westerham 01959 563265**

**EPC Rating- E**

Offices at - BOROUGH GREEN - OTFORD - SEVENOAKS - SOUTHWARK  
TONBRIDGE - WESTMINSTER - WESTERHAM - WEST MALLING

**[www.ibbettmosely.co.uk](http://www.ibbettmosely.co.uk)**

IMPORTANT - Ibbett Mosely, for themselves and for the vendors or lessors of this property whose agents they are give notice that (i) these particulars are set out as a general outline only for guidance of intending purchasers or lessees, and do not constitute, nor constitute part of an offer or contract; (ii) all descriptions, dimensions references to condition and necessary permissions for use and occupation, and other details are given without responsibility and any intending purchasers or tenants should not rely on them as statements or representations of fact but must satisfy themselves by inspection or otherwise as to the correctness of each of them; (iii) no person in the employment of Ibbett Mosely, has any authority to make or give any representation or warranty whatever in relation to this property ver 3.0.

**...a name you can trust**  
*offices in Kent and London*